



**Book early!
Availability
is limited.**



Bourg-en-Bresse Lycée Saint-Pierre

St-Pierre school is located in the center of eastern France. Being a student in Bourg-en-Bresse means living in an eco-friendly, quiet and dynamic environment. This program is a perfect match for motivated students who would also like to attend extracurricular activities.

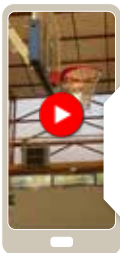
- ▶ **School grades:** 10 to 12 (Lycée)
- ▶ **Number of students:** 709 students
- ▶ **Percentage of international students:** 2,5%
- ▶ **Baccalaureat success rate:** 99,4%
- ▶ **French as a foreign language course:** 3h per week included
- ▶ **Duration:** academic year (from September), semester (from September or January), term (from September or January)
- ▶ **School uniform:** no
- ▶ **Religion classes:** Catholic (optional)

Why do students choose this school?

For the number of activities students can attend at school or in town.

👍 Good to know

Students in grade 10 are not allowed to have lunch outside school.



Scan
for the
School
Tour



Languages taught at school

1st foreign language: English; 2nd foreign language: German, Italian or Spanish; 3rd language: Italian, Spanish or Chinese.



School facilities

- Library
- Computer room
- Gym, fitness center, dojo, track ...
- Art & Culture room
- ...



Optional subjects

(depending on availability upon arrival)

- Plastic and visual arts



Extracurricular clubs and activities

Basketball, horseback riding, rugby, swimming, cycling, volleyball, badminton, fitness, athletics, outdoor activities, arts...

Options offered to students are subject to availability upon arrival. Lessons are at school or in clubs depending on the activity. Registration may be charged to the student for activities outside school and acceptance is at the discretion of the club.



Bourg-en-Bresse

How many people live there?
41.000

What is the nearest arrival point?

Bourg-en-Bresse TGV train station
Lyon Saint-Exupéry airport

What is the area appreciated for?

- The Royal Monastery of Brou
- The local gastronomy
- The gentle way of life and warm atmosphere
- Proximity to ski resorts
- ...

What other interesting places are nearby?

Macon (35 min), Lyon (1h), ski resort (2h)...

Local cuisine

Bresse poultry, Cardoon gratin, Bresse galette (bread, onion, bacon & cheese), Pike quenelles, bleu cheese...

Experience the local lifestyle

- Enjoy the sun with your host family at Chambod's island
- Attend an event at the Ekinox with your host siblings
- Sign up for a sport activity at the municipal sports office
- Buy a birthday gift at the craft market
- Visit the Cerdon caves...